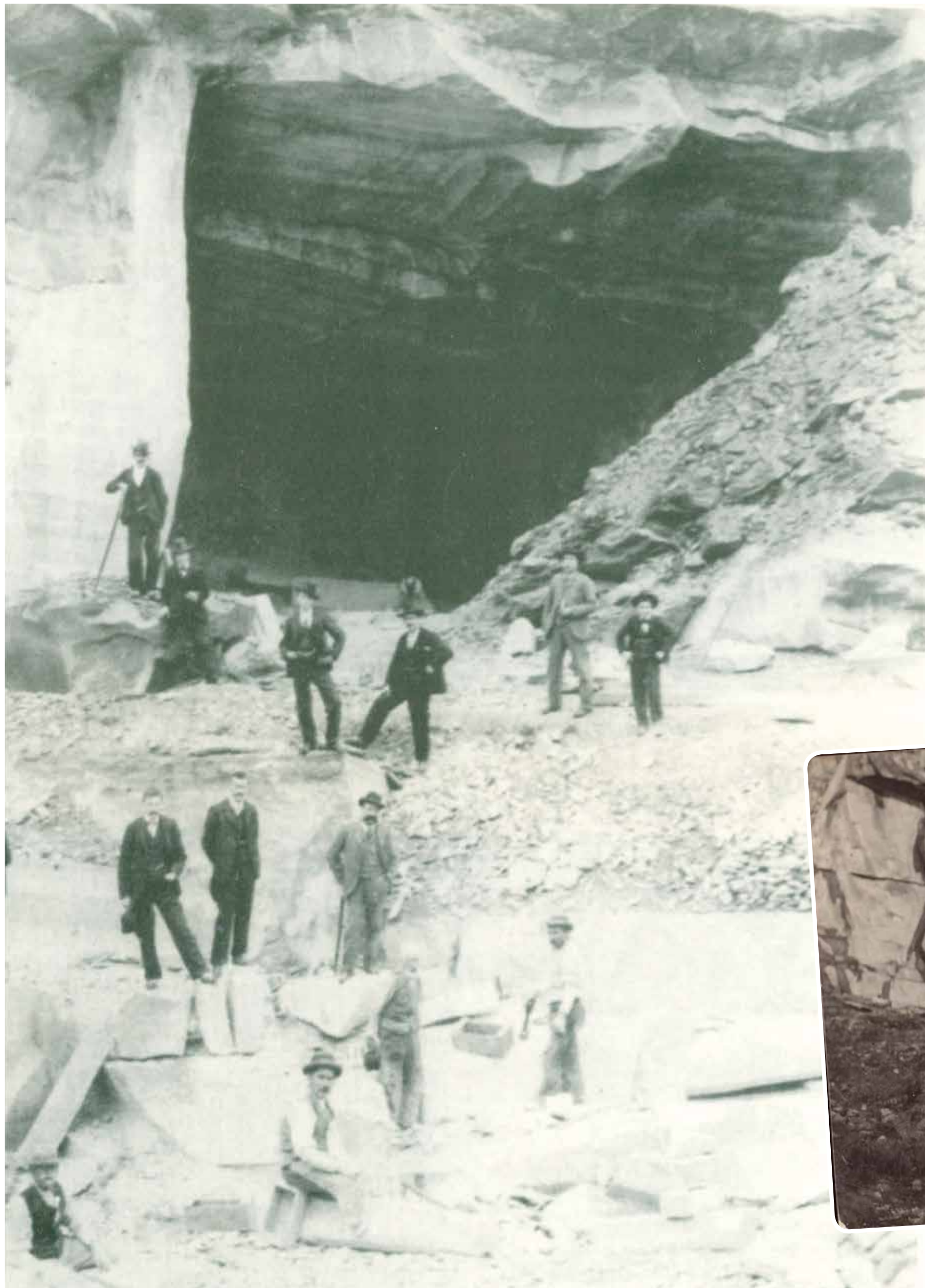


# MonteCeceri

The quarries, the history, the landscape

Graphics by Arts & Altro PROJECT - Fabrizio Darmanin



Latomia 1890 – Settignano Library

On a timescale calculated by geologists in millions of years, a length of time inconceivable from a human perspective, a marine environment was the raw material for distant civilisations to come. Form, density, composition, colour, sedimentary layers interlaced, then fractured, bent, almost coiled, sometimes inclined, tell in their own, precise way a history before history. For those who know how to read the signs they speak of the fascinating motions of earth and water, almost myths of the creation of the world.

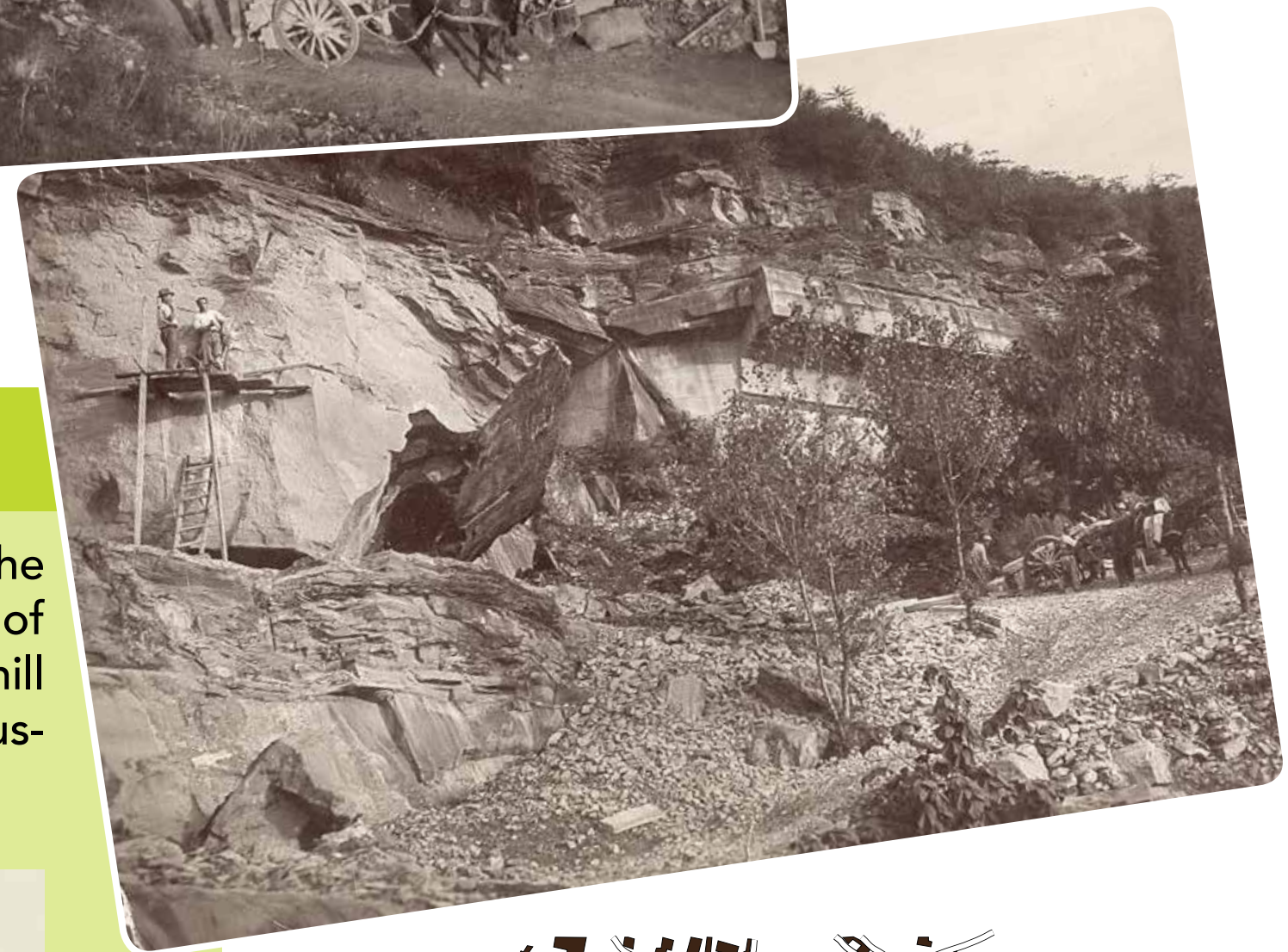
Excerpt from "Il verde è di tutti" text by Carlo Salvianti and Andrea Poggesi

The quarries in Monte Ceceri are of two types:

- **Latomia**, a cave-like quarry (for example, Braschi and Canara).
- **Tagliata**: an open-cast quarry. The geological shape of the mountain and the quality and quantity of the stone layers remain visible in vertical cross-section (eg cave Fratelli Sarti).



Municipal Archives of Fiesole, Ranfagni Fund



## Landscape transformations

The landscape is the result of the natural evolution of human activity on the environment, the case of secular historical mining activity is a good example of this, with over 40 quarries active at one time. In the picture from 1929, the hill appears visibly bare; reforestation has taken place since 1970 and was only suspended during times of war.

1929



1970

